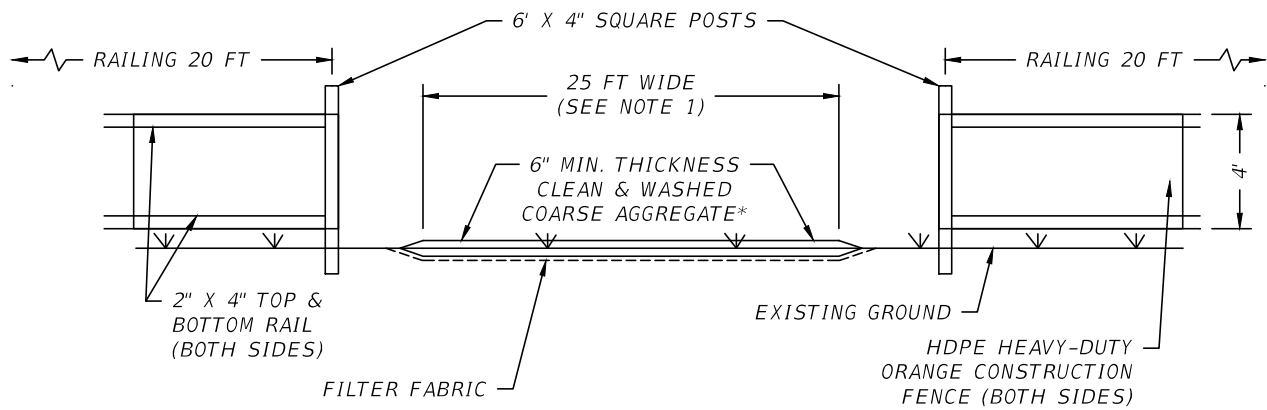


PLAN



ELEVATION

NOTES:

1. CITY MAY REDUCE OR EXTEND THIS DIMENSION IF CONDITIONS PERMIT AND IF REQUESTED BY THE CONTRACTOR.
2. CITY MAY ALLOW NO. 57 STONE, OR CLEAN, WASHED RECYCLED CONCRETE MEETING THE MINIMUM SIZE OF NO. 1 STONE AS AN ALTERNATE IF REQUESTED BY THE CONTRACTOR.



CITY ENGINEER'S OFFICE
1805 NE 30TH AVE, BLDG #600
OCALA, FLORIDA 34470

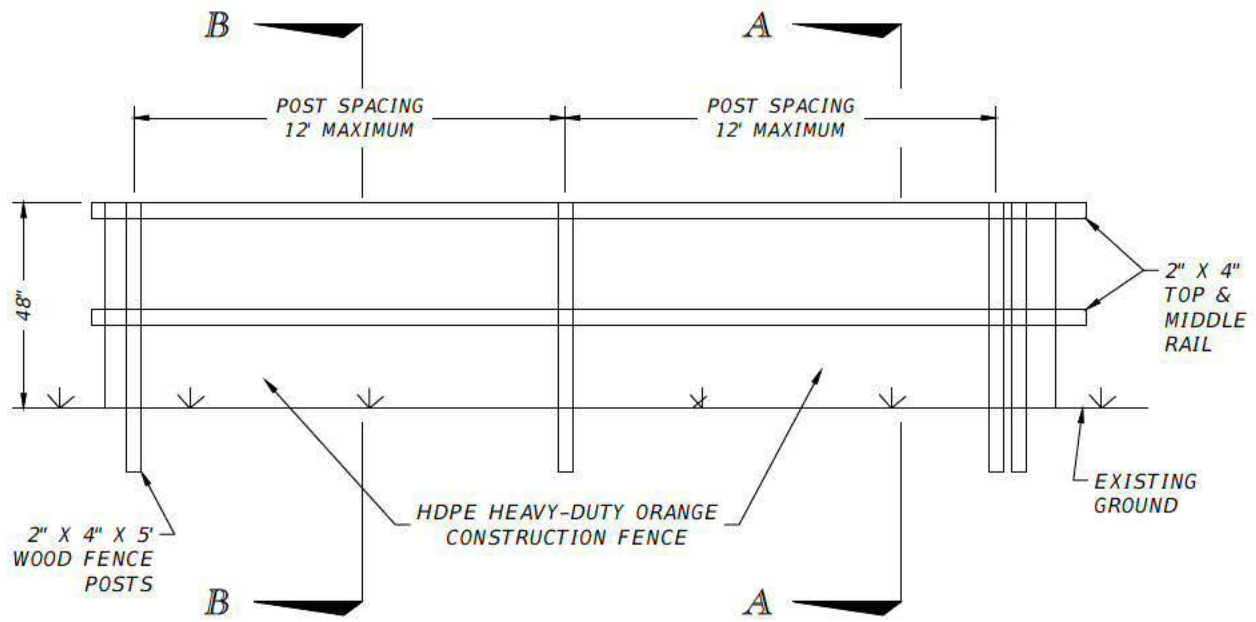
CITY OF OCALA
STANDARD DETAILS
FOR CONSTRUCTION

TYPICAL CONSTRUCTION
ENTRANCE TRACKING
PAD

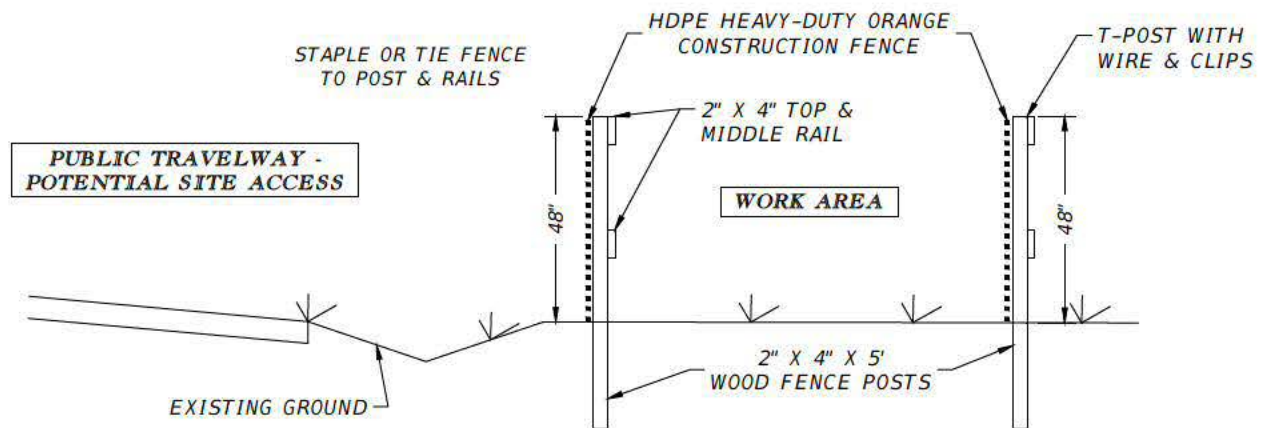
SECTION:
GENERAL

G-22

REVISION DATE:
JAN 2023



ELEVATION



SECTION A
(OPTION WITH 2" X 4"
POSTS AND RAILS)

SECTION B
(OPTION WITH T-POSTS
AND 16 GAUGE WIRES)

NOTES:

1. T-POSTS WITH 16 GAUGE TOP AND MIDDLE WIRES (SECTION B) ARE CITY STANDARD.
2. CITY MAY REQUIRE 2" X 4" WOOD POSTS & RAILS IN LIEU OF THE THE CITY STANDARD (SECTION B) IF REQUIRED BY SITE CONDITIONS.



CITY ENGINEER'S OFFICE
1805 NE 30TH AVE, BLDG #600
OCALA, FLORIDA 34470

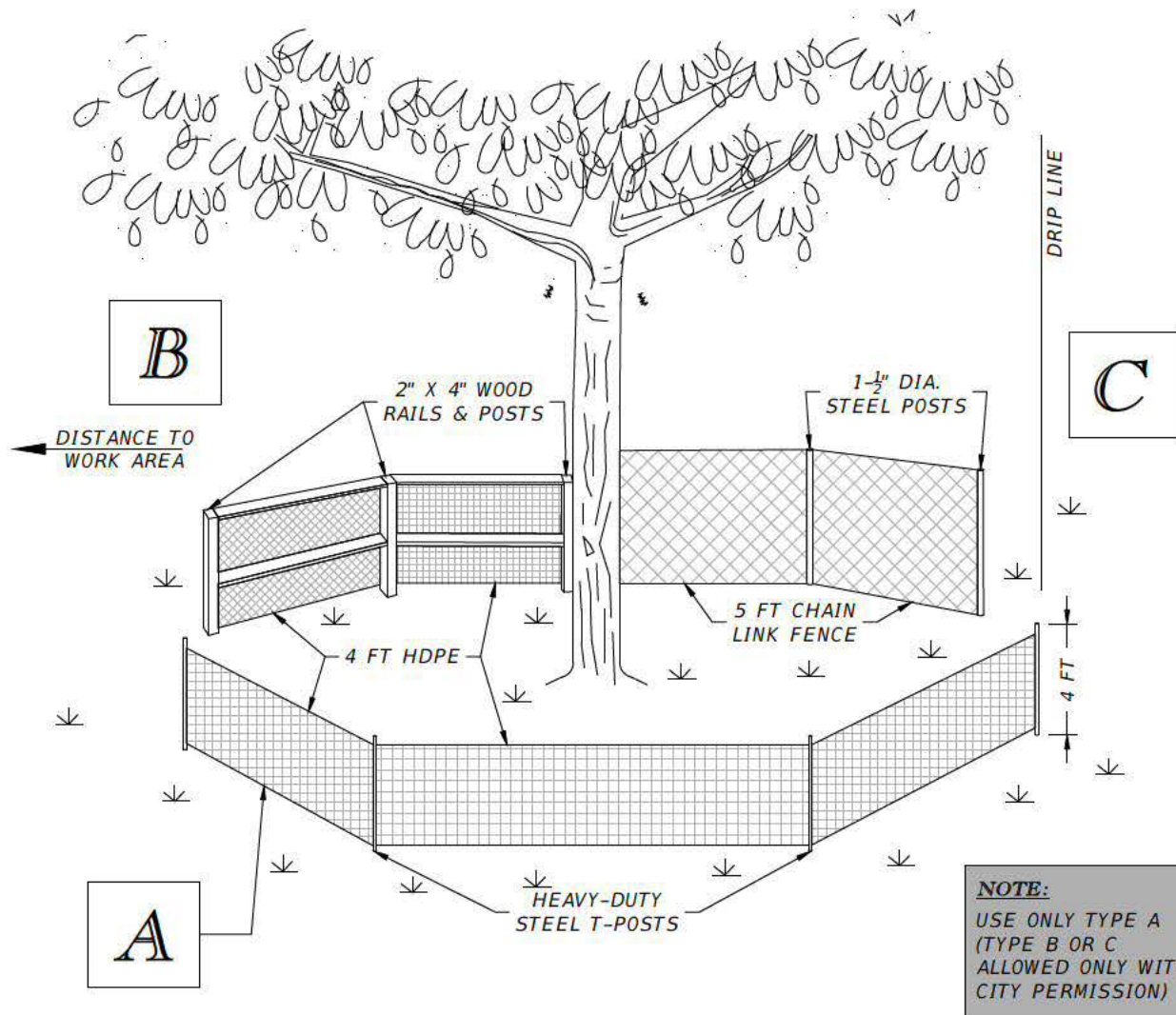
CITY OF OCALA
STANDARD DETAILS
FOR CONSTRUCTION

**TYPICAL
CONSTRUCTION
BARRIER FENCE**

SECTION
GENERAL

G-23

REVISION DATE:
DEC 2020



TREE PROTECTION FENCE TYPE CHART

FENCE TYPE	FENCE FABRIC MATERIAL	SET FENCE AT:	DISTANCE TO WORK AREA	FENCE HEIGHT (MIN.)	POST TYPE	POST SPACING (MAX.)	MIDDLE & TOP RAIL
A STANDARD	HDPE HEAVY-DUTY ORANGE CONSTRUCTION BARRIER	DRIP LINE	10 FEET OR MORE	4 FEET	H-DUTY T-POST	8 FEET	16-GAUGE WIRE
B	HDPE HEAVY-DUTY ORANGE CONSTRUCTION BARRIER	90% OF DRIP LINE	5 FEET	4 FEET	2" X 4" WOOD	12 FEET	2" X 4" WOOD
C	GALVANIZED STEEL CHAIN LINK	75% OF DRIP LINE	3 FEET OR LESS	5 FEET	1-1/2" DIA. STEEL	12 FEET	NONE



CITY ENGINEER'S OFFICE
1805 NE 30TH AVE, BLDG #600
OCALA, FLORIDA 34470

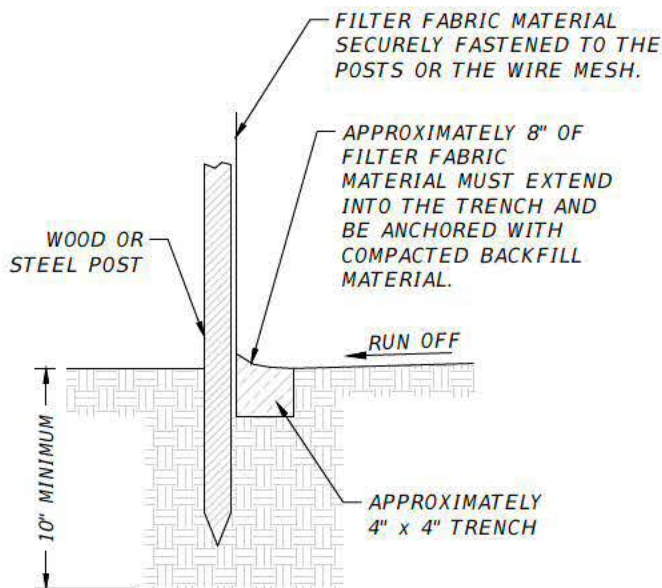
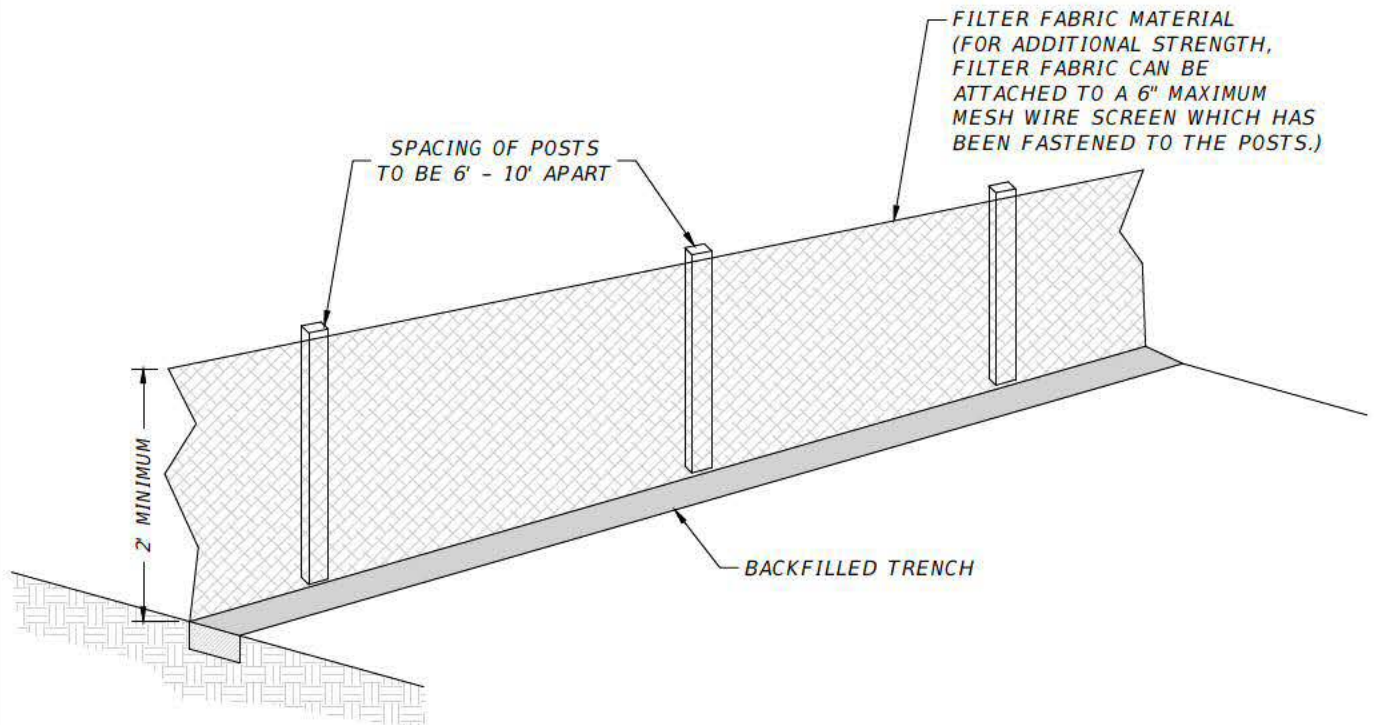
CITY OF OCALA
STANDARD DETAILS
FOR CONSTRUCTION

**TYPICAL TREE
PROTECTION**

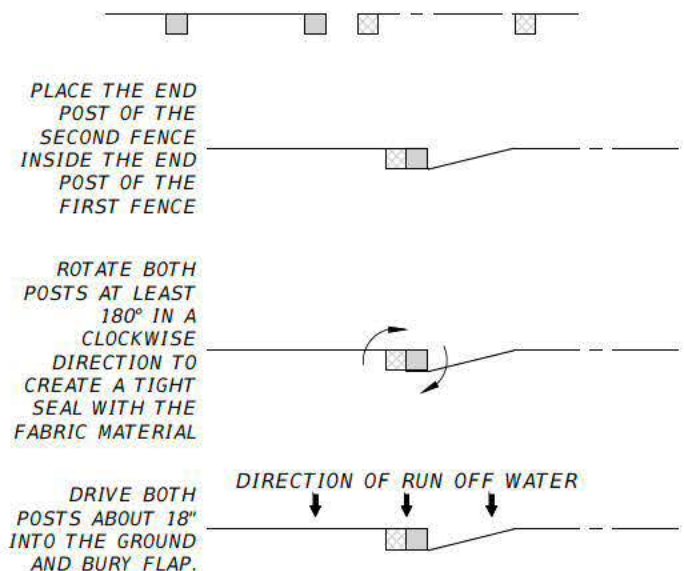
SECTION
GENERAL

G-24

REVISION DATE:
DEC 2020



ATTACHING TWO SILT FENCES



CITY ENGINEER'S OFFICE
1805 NE 30TH AVE, BLDG #600
OCALA, FLORIDA 34470

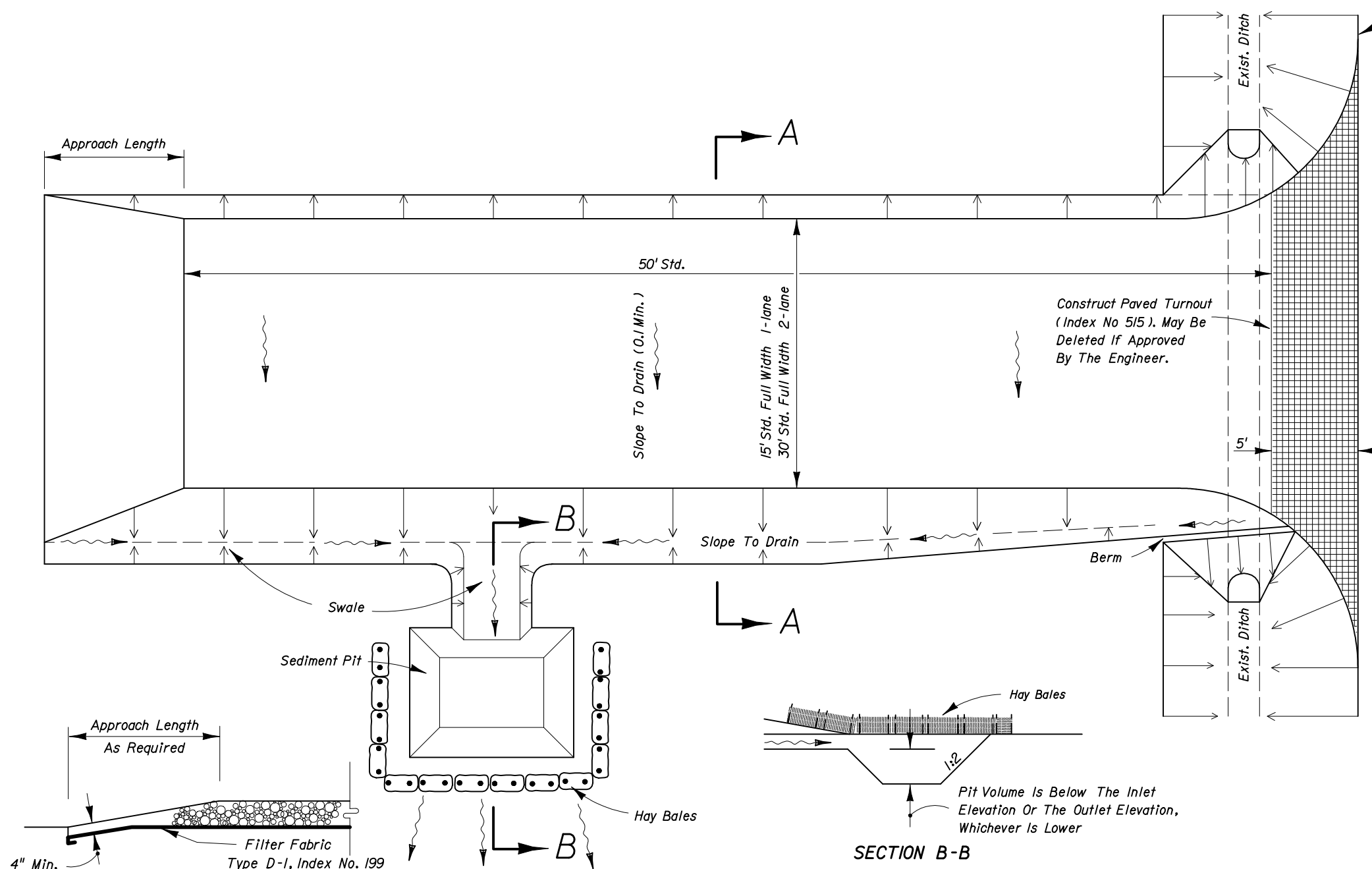
CITY OF OCALA
STANDARD DETAILS
FOR CONSTRUCTION

TYPICAL SILT FENCE

SECTION
GENERAL

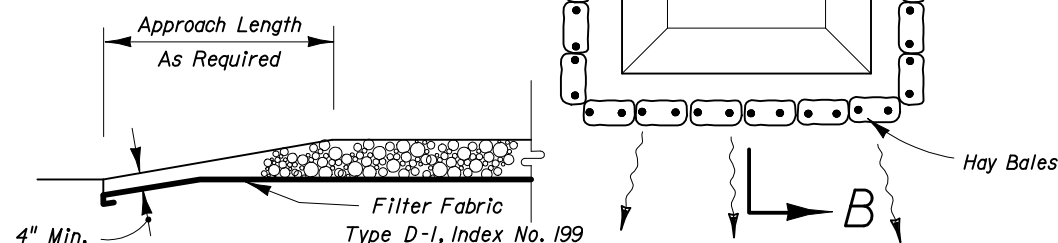
G-25

REVISION DATE:
DEC 2020

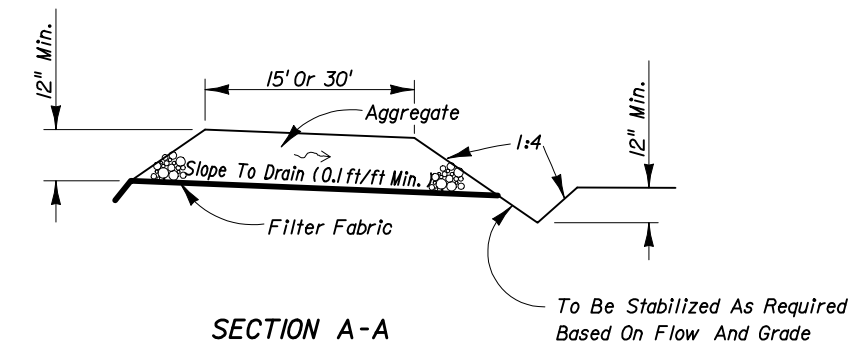


GENERAL NOTES

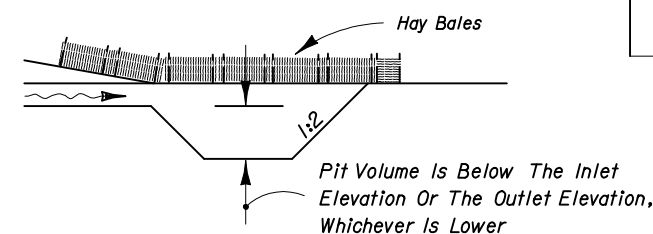
1. A Soil Tracking Prevention Device (STPD) shall be constructed at locations designated by the engineer for points of egress from unstabilized areas of the project to public roads where offsite tracking of mud could occur. Traffic from unstabilized areas of the construction project shall be directed thru a STPD. Barriers, flagging, or other positive means shall be used as required to limit and direct vehicular egress across the STPD.
2. The Contractor may propose an alternative technique to minimize offsite tracking of sediment. The alternative must be reviewed and approved by the Engineer prior to its use.
3. All materials spilled, dropped, or tracked onto public roads (including the STPD aggregate and construction mud) shall be removed daily, or more frequently if so directed by the Engineer.
4. Aggregates shall be as described in Section 901 excluding 901-2.3. Aggregates shall be FDOT size #1. If this size is not available, the next available smaller size aggregate may be substituted with the approval of the Engineer. Sizes containing excessive small aggregate will track off the project and are unsuitable.
5. The sediment pit should provide a retention volume of 3600 cubic feet/acre of surface area draining to the pit. When the STPD is isolated from other drainage areas, the following pit volumes will satisfy this requirement:
 $15' \times 50' = 100 \text{ ft}^3$ $30' \times 50' = 200 \text{ ft}^3$
 As an option to the sediment pit, the width of the swale bottom can be increased to obtain the volume. When the sediment pit or swale volume has been reduced to one half, it shall be cleaned. When a swale is used, hay bales or silt fence shall be placed along the entire length.
6. The swale ditch draining the STPD shall have a 0.2% minimum and a 1.0% maximum grade along the STPD and to the sediment pit.
7. Mitered end sections are not required when the sidedrain pipe satisfies the clear zone requirements.
8. The STPD shall be maintained in a condition that will allow it to perform its function. To prevent offsite tracking, the STPD shall be rinsed (daily when in use) to move accumulated mud downward thru the stone. Additional stabilization of the vehicular route leading to the STPD may be required to limit the mud tracked.
9. A STPD shall be paid for under the contract unit price for Soil Tracking Prevention Device, EA. The unit price shall constitute full compensation for construction, maintenance, replacement of materials, removal, and restoration of the area utilized for the STPD; including but not limited to excavation, grading, temporary pipe (including MES when required), filter fabric, aggregate, paved turnout (including asphalt and base construction), ditch stabilization, approach route stabilization, sediment removal and disposal, water, rinsing and cleaning of the STPD and cleaning of public roads, grassing and sod. Hay bales shall be paid for under the contract unit price for Hay or Straw Baled, EA. Silt fence shall be paid for under the contract unit price for Staked Silt Fence, LF.
10. The nominal size of a standard STPD is 15' x 50' unless otherwise shown in the plans. If the volume of entering and exiting vehicles warrant, a 30' width STPD may be used if approved by the Engineer. When a double width (30') STPD is used, the pay quantity shall be 2 for each location.



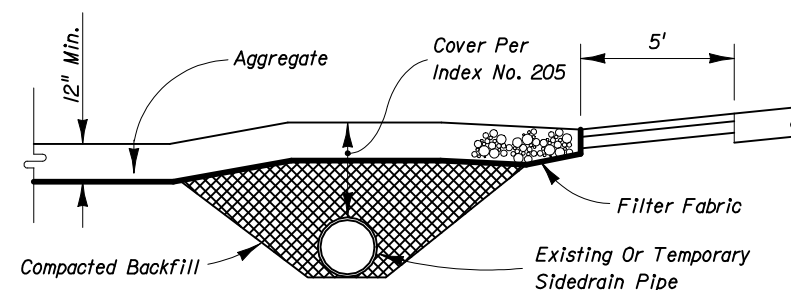
TRANSITION DETAIL



SECTION A-A



SECTION B-B



RURAL CONNECTION DETAIL



2006 FDOT Design Standards

SOIL TRACKING PREVENTION DEVICE TYPE A

Last
Revision
00

Sheet No.
1 of 1

Index No.
106